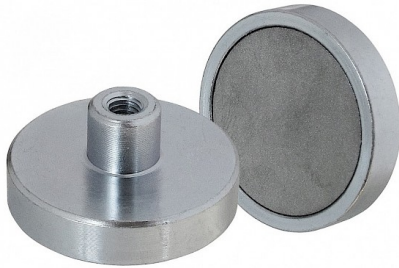


Shallow Pot Magnets with Threaded Hole | Ferrite (Ceramic)



A female threaded stud pot magnet is another name for an internal threaded stud pot magnet. They are made up of a ferromagnetic mild steel cup containing a magnet (usually a disc magnet) and a ferromagnetic mild steel stud / boss / bush mounting at the back of the pot magnet with a threaded hole.

Female threaded stud pot magnets are so named because the internal threaded hole can accept pot magnets with threaded bars on the back (external threaded stud pot magnets / male threaded stud pot magnets) as well as bolts. Because the mild steel stud / boss is threaded, there is enough thread length to apply a reasonable amount of torque to securely hold each pot magnet in place.

Specifications

Details

